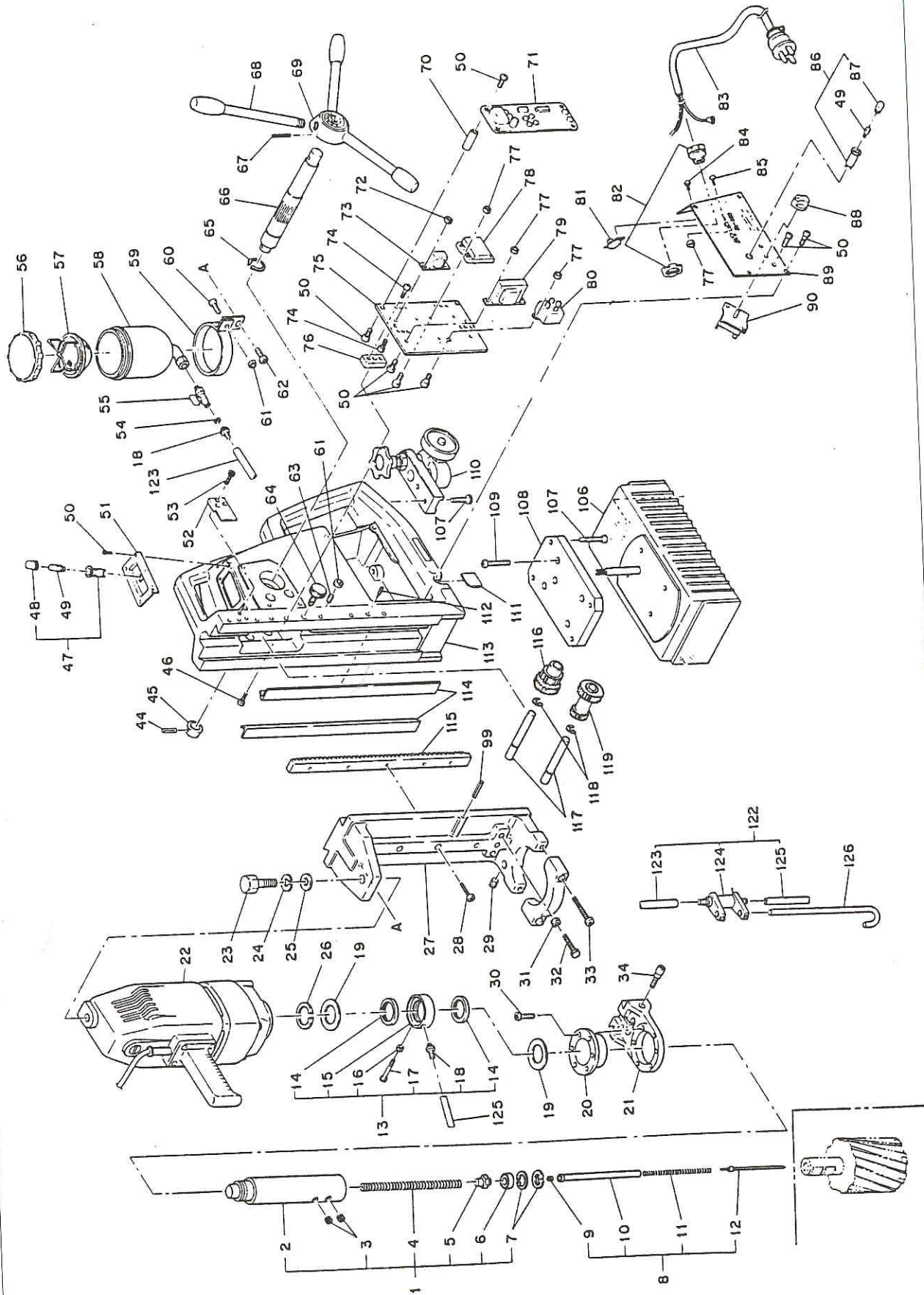


ATRA ACE A-100 ASSEMBLY AND PARTS LIST



The parts numbers with () are included in the Assy parts written above them.

No.	Part No.	Part Name	Q'ty	Price
1	TA9A686	Arbor Body Assy	1 set	
2	TP17596	Arbor Body	1	
3	TP17597	Hex. Screw 16X9	2	
4	TP16720	Spring 1.6X11X177	1	
5	TP16721	Pilot Spacer	1	
6	TP16722	Spacer 16X31.8X12	1	
7	TP07623	Retaining Ring C-32	2	
8	TA9A207	Pilot 12075 Assy	1	
9	TP06158	Hex. Screw 8X8	1	
10	TJ16748	Pilot 12075 A	1	
11	TP16750	Spring 1X5.3X120	1	
12	TP16749	Pilot 12075 B	1	
13	TA9A193	Oil Ring Assy	1	
14	TP14499	Oil Seal GD38X48X4	2	
15	TP14964	Oil Ring	1	
16	LP10496	Hex. Nut	1	
17	TP05469	Hex. Screw 6X45	1	
18	TP14500	Hose Nipple	2	
19	TP12773	Washer 38.5X54X1	2	
20	TB00732	Bush	1	
21	TP16725	Bracket	1	
22	TB00564	Electric Drill Assy	1	
23	TP15637	Hex. Bolt 16X40	1	
24	TP15638	Spring Washer M16	1	
25	TP00802	Plain Washer M16	1	
26	TP14969	Retaining Ring ISTW-38	1	
27	TP16734	Slide Plate	1	
28	TP15882	Hex. Screw 5X35	5	
29	TP06141	Hex. Screw 6X6	1	
30	TP02862	Hex. Screw 5X15	6	
31	TP08584	Hex. Nut M8	3	
32	TP04531	Hex. Bolt 8X30	2	
33	TP16284	Hex. Screw 8X45	2	
34	TP02260	Hex. Screw 8X35	1	
44	TP03261	Spring Pin 4X28	1	
45	TP02575	Cap	1	
46	TP02638	⊕ Screw 4X12	4	
47	TP00164	Lamp Holder MP-018 Red	1	
49	TP00053	Neon Lamp E-10 T-10 220V	2	
50	TP02618	⊕ Screw 4X8	26	
51	TP16737	Lamp Holder Plate	1	
52	TP17636	Stopper Plate	1	

No.	Part No.	Part Name	Q'ty	Price
53	TP01644	Hex. Screw 6X12	3	
-	TA98903	Oil Cup Assy	1	
54	CP21947	Seal Packing	1	
55	TP14495	Two-Port Cock	1	
56	TP11916	Cover	1	
57	TP15823	Oil Cleaner	1	
58	TA98909	Oil Cup Sub Assy	1	
59	TP14497	Cup Holder	1	
60	TP16193	⊕ Screw 5X14	1	
61	TP02936	Hex. Nut M5	7	
62	TP00021	Hex. Screw 5X10	1	
63	TP02937	Hex. Screw 5X20	6	
64	TP02931	Set Screw	1	
65	TP02578	CE Type Retaining Ring CE-22	1	
66	TP02571	Pinion Shaft	1	
67	TP09853	Spring Pin 5X34	1	
68	TP00118	Feed Handle	3	
69	TP02572	Handle Boss	1	
70	TP16738	Spacer	4	
71	TA98679	Load Detecting Device Sub Assy	1	
72	TP00067	Hex. Nut M3	2	
73	TP15957	Sensor Transformer	1	
74	TP00056	⊕ Screw 3X6	10	
75	TP16740	Load Detecting Device Board	1	
76	TP16741	Holder	4	
77	TP02639	Hex. Nut M4	7	
78	TP14429	Solid Relay SF20DI-HI	1	
79	TP16739	Transformer 2H2403	1	
80	TP02637	Silicon Rectifier DS10BN-H	1	
81	TP14428	Switch MF20IN	1	
82	TP14698	Cable Connector	2	
83	TA97849	Cable Assy (1.25 3-core)	1	
84	TP02618	⊕ Screw 4X8	2	
85	TP08489	⊕ Blind Screw 4X6	1	
86	TP14395	Lamp Holder MP-018	1	
88	TP12781	Knob MY-30	1	
89	TQ00776	Circuit Board	1	
90	TP12780	Rotary Switch	1	
106	TB00006	Square Magnet Sub Assy	1	
107	TP00045	Hex. Screw 8X25	6	
108	TP16717	Pole Plate	1	
110	TA94059	Stabilizer Assy	1	

No.	Part No.	Part Name	Q'ty	Price
111	TP16724	Dust Cover	1	
112	TP04519	Hex. Screw 5X18	4	
113	TA9A190	Body Sub Assy	1	
114	TP13832	Slide Plate	2	
115	TP16735	Rack	1	
116	TP06526	Gear B	1	
117	TP02567	Gear Shaft	2	
118	TP02570	E-Type Retaining Ring E-140	2	
119	TP06525	Gear A	1	
122	TA98688	Oil Dropper Assy	1	
123	TP15965	Tube 4X7X190	1	
124	TA9A390	Oil Dropper Sub Assy	1	
125	TP15964	Tube 4X7X150	1	
126	TP15156	Oil Ring Stopper	1	

ACCESSORIES

No.	Part No.	Part Name	Q'ty	Price
	TP13892	Hex. Wrench Key 2	1 set	
	TP04305	Hex. Wrench Key 2.5	1	
	TP04696	Hex. Wrench Key 3	1	
	TP01939	Hex. Wrench Key 4	1	
	TP04004	Hex. Wrench Key 5	1	
	TP00170	Hex. Wrench Key 6	1	
	TP03249	Hex. Wrench Key 8	1	
	TP14091	Spanner 7X8	1	
	TP10198	Tool Box 285X125X62	1	
	TA98987	Soluble Cutting Oil 0.5 Assy	1	
	TA99027	Safety Chain Assy	1	

*When ordering spare parts, please state the description and part number of the spare part (Not the Ref. No.) as well as the model.