

# HS11-1624

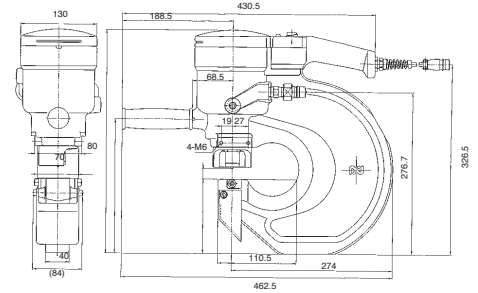
Allowable Max. Pressure

**104,380 lbs (52ton)**

Max. Punching Thickness: 5/8"  
(A36)  
Max. Punching Diameter: 15/16"

MODEL

# HS11-1624



## Specifications

Model		HS11-1624		
Max. Throat Depth	inch (mm)	4-5/16" (110)		
Punching capacity	inch (mm)	Max. Punching Diameter	Max. Punching Thickness	
		Mild Steel A36	15/16" (24)	5/8" (16)
		Stainless Steel 304	15/16" (24)	1/4" (6)
Hole Making Time		Punching Time 11.8 sec. Returning Time 5.7 sec.		
Allowable Max. Pressure		10,000 psi (700 kgf/cm <sup>2</sup> )		
Max. Output	lbs (ton)	104,380 (52)		
Ram Stroke	inch (mm)	1" (25)		
Mass (Weight)	lbs (kg)	66 (30)		

\*Can be modified to accept 1-1/16" punch & die. Consult factory.

## Standard Accessories for HS11-1624

- Hose kit assembly
- Hose cord assembly
- Sub handle assembly
- Tool box
- #12 Spanner wrench
- 22 mm "D" series punch & die
- Chip guard assembly
- Spanner