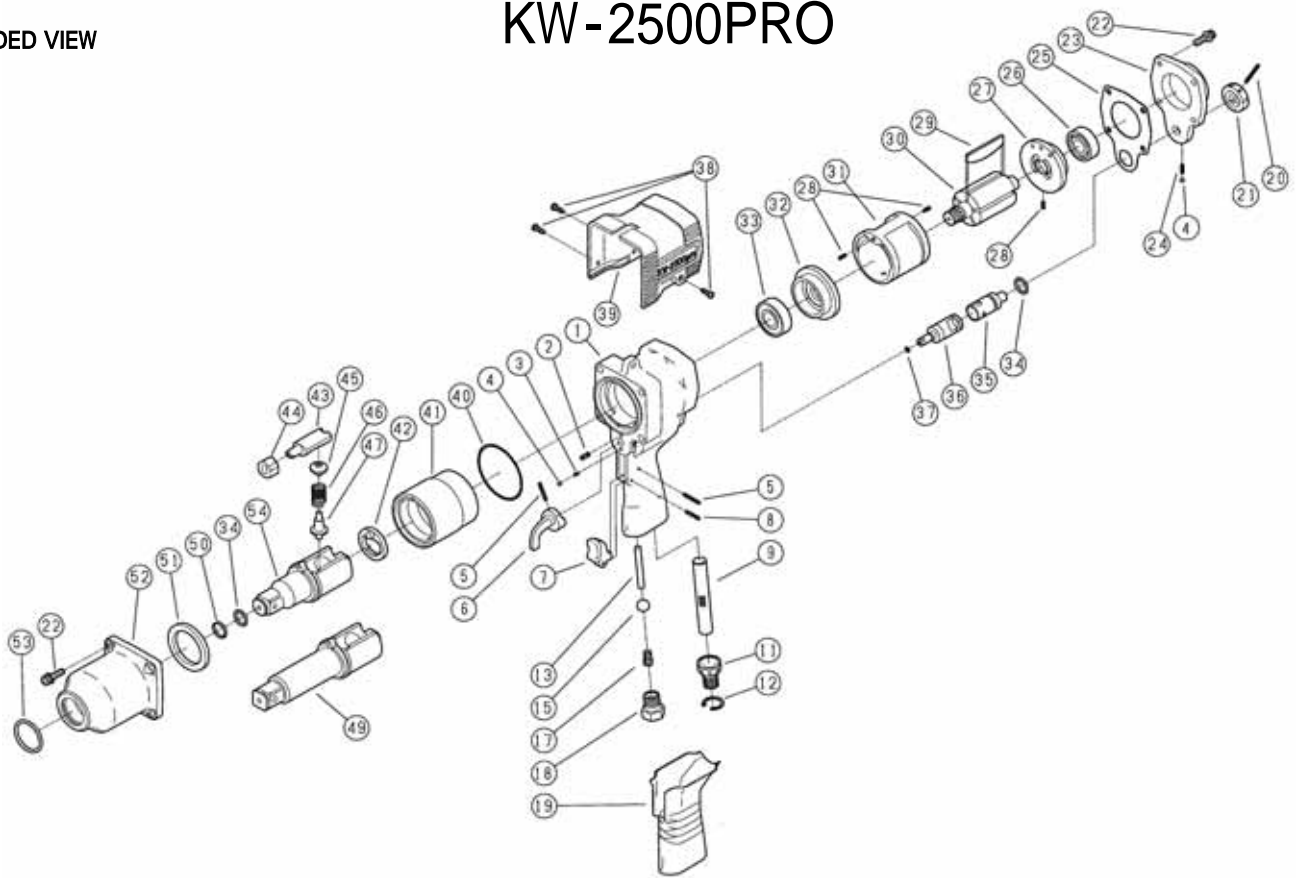


## KW-2500PRO



REF.NO.	PART NO.	PART NAME	Q'TY	REF.NO.	PART NO.	PART NAME	Q'TY
1	0525081B1	MOTOR CASE C.P.	1	33	Z0016203Z	BALL BEARING	1
2	Z0564X8	PIN	1	34	Z040P14	O-RING	2
3	0114194	KNOCK SPRING	1	35	0525017B	REGULATOR VALVE	1
4	Z0104D	STEEL BALL	1	36	0528015	REVERSE VALVE	1
5	Z0563X22	PIN	1	37	Z041S6	O-RING	1
6	0525016B	REVERSE LEVER	1	38	Z0804X10	TAPPING SCREW	3
7	0525012B	THROTTLE LEVER	1	39	05250041B	PROTECTOR	1
8	Z0563X18	PIN	1	40	Z041S63	O-RING	1
9	05250401BA	NOISE SUPPRESSOR	1	41	0525026	HAMMER WHEEL	1
11	0525040B	MUFFLER	1	42	0525050	RETAINER	1
12	Z03124	RETAINER RING	1	43	0525028	ANVIL PIECE	1
13	0525013	THROTTLE VALVE PIN	1	44	0525027	CAM	1
15	Z0111/2D	THROTTLE VALVE BALL	1	45	0525052B	PLUNGER B	1
17	0108938	THROTTLE VALVE SPRING	1	46	0525053	SPRING	1
18	0516011A	INLET BUSHING	1	47	0525051B	PLUNGER A	1
(18)	0516011N	INLET BUSHING ( NPT )	1	48	05250843AH	SQ.DR.ANVIL C.P.	1
19	05250011B	GRIP	1	49	05250845AH	3"LONG-SQ.DR.ANVIL C.P.	1
20	Z0563X28	PIN	1	(49)	05250844AH	6"LONG-SQ.DR.ANVIL C.P.	1
21	0438318	REGULATING VALVE KNOB	1	50	0120128	RETAINER RING	1
22	Z0666X20A	BOLT	8	51	0525029	BUSHING	1
23	0525088B	CASE COVER C.P.	1	52	0525082B1	IMPACT HOUSING C.P.	1
24	0114192	KNOCK SPRING	1	53	Z040P32	O-RING	1
25	0525006B	MOTOR HOUSING GASKET	1				
26	Z0016202	BALL BEARING	1				
27	0120113A	REAR END PLATE	1				
28	Z0563X8	PIN	3				
29	0525022B	ROTOR BLADE	5				
30	0525021B	ROTOR	1				
31	0120115	CYLINDER	1				
32	0525023	FRONT END PLATE	1				



**KUKEN CO., LTD.**

3-6-15 Nonoue, Habikino-shi, Osaka 583-0871, Japan

Tel : +81-72-953-3346 Fax : +81-72-953-0605

2010/12/06