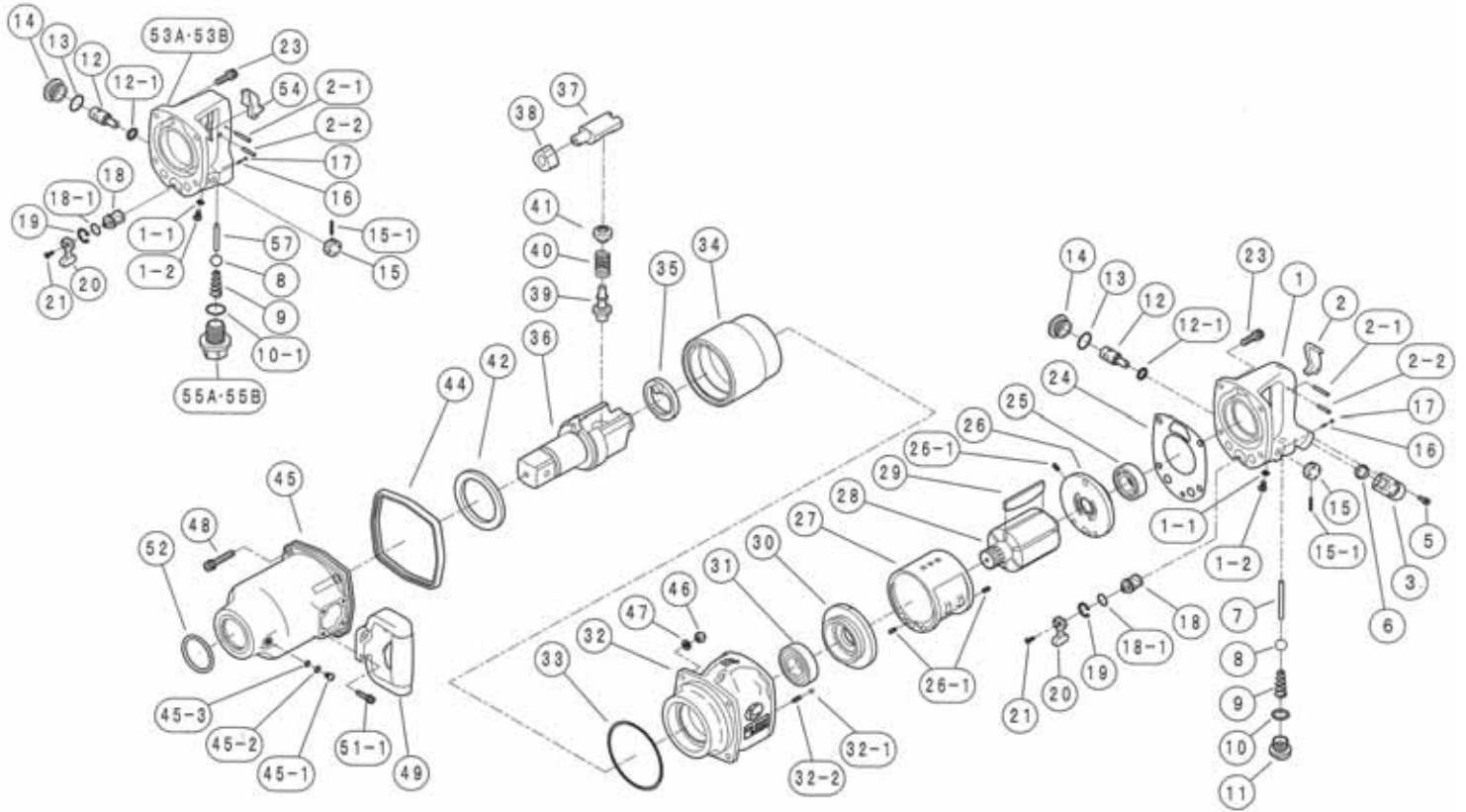


KW-5000G

EXPLODED VIEW



REF.NO.	PART NO.	PART NAME	Q'TY	REF.NO.	PART NO.	PART NAME	Q'TY
1	0142080B1	HANDLE C.P.	1	32	0550181BI	MOTOR CASE(FRONT EXHAUST)	1
2	0132117D	THROTTLE LEVER	1	32-1	Z0106D	STEEL BALL	1
2-1	Z0614X28	PIN	1	32-2	0132991	KNOCK SPRING	1
2-2	Z0614X22	PIN	1	33	Z041S110	O-RING	1
3	0345290	INLET BUSHING	1	34	0550026	HAMMER WHEEL	1
5	Z0665X12A	BOLT	4	35	0550050	RETAINER	1
6	Z040P16	O-RING	1	36	0550030A	1-1/2"SQ.DR.ANVIL	1
7	0142013B	THROTTLE VALVE PIN	1	37	0550028	ANVIL PIECE	1
8	Z0115/8D	THROTTLE VALVE	1	38	0550027	CAM	1
9	0132190	THROTTLE SPRING	1	39	0550051B	PLUNGER A	1
10	Z040P20	O-RING	1	40	0550053	SPRING	1
11	0132150	PLUG	1	41	0550052B	PLUNGER B	1
12	0446017	REGULATOR VALVE	1	42	0550029	BUSHING	1
12-1	Z040P14	O-RING	1	44	0142071	REAR RUBBER PROTECTOR	1
13	Z041S26	O-RING	1	45	0550182	IMPACT HOUSING CP	1
14	04460391	PLUG	1	45-1	Z0886X8	GREASE SCREW	1
15	0442314	REGULATOR KNOB	1	45-2	Z0996	TOOTHED LOCK WASHER	1
15-1	Z0563X22	PIN	1	45-3	Z040P6	O-RING	1
16	0114193	KNOCK SPRING	1	46	Z0918	LOCK NUT	4
17	Z0104D	STEEL BALL	1	47	Z0968X1	WASHER	4
18	0142015B	REVERSE VALVE	1	48	Z0668X45A	BOLT	4
18-1	Z041S18	O-RING	1	49	0442387	DEAD HANDLE C.P.	1
19	Z03121	RETAINER	1	51	Z0666X20A	BOLT	4
20	0132915	REVERSE LEVER	1	52	Z040P50	O-RING	1
21	Z0674X12	SCREW	1				
23	Z0668X25A	BOLT	4				
24	0142006B	MOTOR HOUSING GASKET	1				
25	Z0016205	REAR BEARING	1	PARTS FOR INSIDE TRIGGER HANDLE			
26	0132124	REAR END PLATE	1	1-1	Z0846X10	SCREW	1
26-1	Z0565X10	SPRING PIN	3	1-2	Z040P6	O-RING	1
27	0140509	CYLINDER	1	10-1	Z040P28J	O-RING	1
28	0550021	ROTOR	1	53A	0550180BNS	HANDLE C.P. (NPT)	1
29	0550022	ROTOR BLADE	6	53B	0550180BTS	HANDLE C.P. (PT)	1
30	0550023	FRONT END PLATE	1	54	0345417	THROTTLE LEVER	1
31	Z0016206Z	BALL BEARING	1	55A	0132919NIS	INLET BUSHING (NPT)	1
32	0550181B	MOTOR CASE(REAR EXHAUST)	1	55B	0132919IS	INLET BUSHING (PT)	1
				57	0550113BT	THROTTLE LEVER	1



KUKEN CO., LTD.

3-6-15 Nonoue, Habikino-shi, Osaka 583-0871, Japan

Tel : +81-72-953-3346 Fax : +81-72-953-0605

2010/12/6